



HOME & LAND

4

2

2

NON-FIXED PRICE

PACKAGE ID
1317



*Facade displayed is optional and may include additional costs.

The Layton at Windarra Estate

House Details Land Details

Design: Standard Design
Size: 267m² 28.7 squares
Facade: Barcomb

Lot: 67 Wilga Drive
Suburb: Bunya
Size: 4036m²

Package Details

Alfresco Floor
Pavers & concrete

Spacious layout
3 coat paint system
Guarant 18wk build
6*energy rating
Open plan living
Rumpus/Games
Media Lounge
Covenant Compliant

Face Brick

Cabinetry
Overhead Cupboards
Bench

Internal Finish
Auto garage door
European appliances
Built-in wardrobes
Flush panel doors

Outdoor
Extended Eaves
Face Brick Work
Water tank: 5000L
Roof pitch: 25 degrees

Driveway & Path
Pavers/concrete path
Pavers/concrete drive

Portico Floor
Pavers/concrete

Flooring
Carpets
Ceramic tiles

Portico Floor
Pavers/concrete

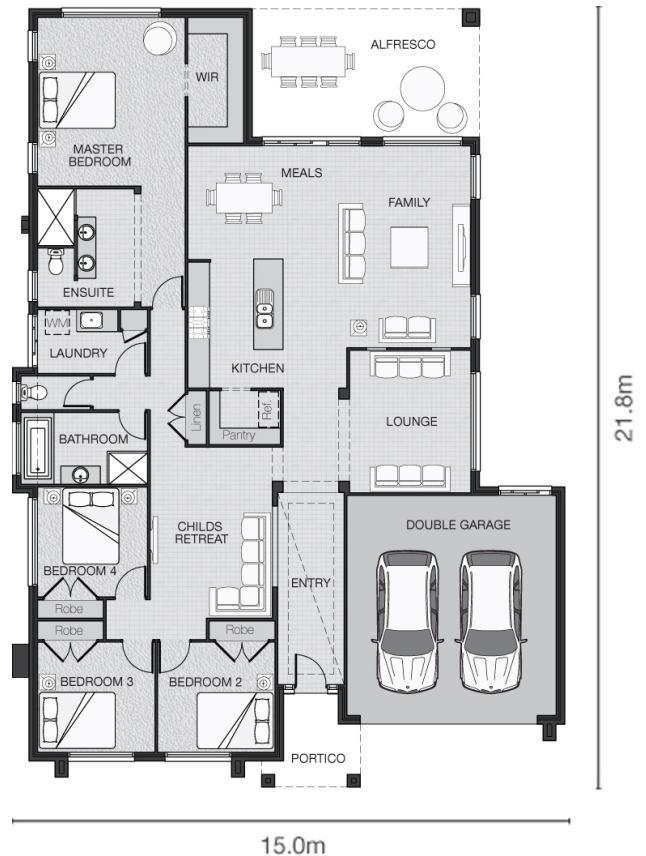
Highlights
Local council fees
Adenbrook inclusions
Class "M" Slab
Under-roof alfresco

Laundry
Folding clothesline
Letterbox

Roof
Colorbond



Joanne Walters
0414 929 499



This work is exclusively owned by Avalon Property Group Pty Ltd and cannot be reproduced or copied, either wholly or in part, in any form without the permission of Avalon Property Group Pty Ltd. For more information on this package including full details on the inclusions, the home and the estate, visit www.adenbrook.com.au. Price is subject to soil test, contour survey and estate design covenants and is inclusive of GST. Adenbrook Homes reserves the right to change pricing without notice. Conditions apply. Adenbrook Homes Pty Ltd QBSA: 1122 127 ABN: 66 865 201 104