



# HOME & LAND

4

2.5

2

NON-FIXED PRICE

PACKAGE ID  
**1318**



\*Facade displayed is optional and may include additional costs.

## The Penn at Windarra Estate

### House Details      Land Details

**Design:** Standard Design  
**Size:** 316m<sup>2</sup> 34.0 squares  
**Facade:** Barcomb

**Lot:** 73 Wilga Drive  
**Suburb:** Bunya  
**Size:** 4002m<sup>2</sup>

### Package Details

**Alfresco Floor**  
Pavers & concrete

**Cabinetry**  
Overhead Cupboards  
Bench

**Driveway & Path**  
Pavers/concrete path  
Pavers/concrete drive

**Flooring**  
Carpets  
Ceramic tiles

**Highlights**  
Local council fees  
Adenbrook inclusions  
Class "M" Slab  
Under-roof alfresco

Spacious layout  
3 coat paint system  
Guarant 18wk build  
6\*energy rating  
Open plan living  
Study  
Rumpus/Games  
Media Lounge  
Covenant Compliant

**Internal Finish**  
Auto garage door  
European appliances  
Built-in wardrobes  
Flush panel doors

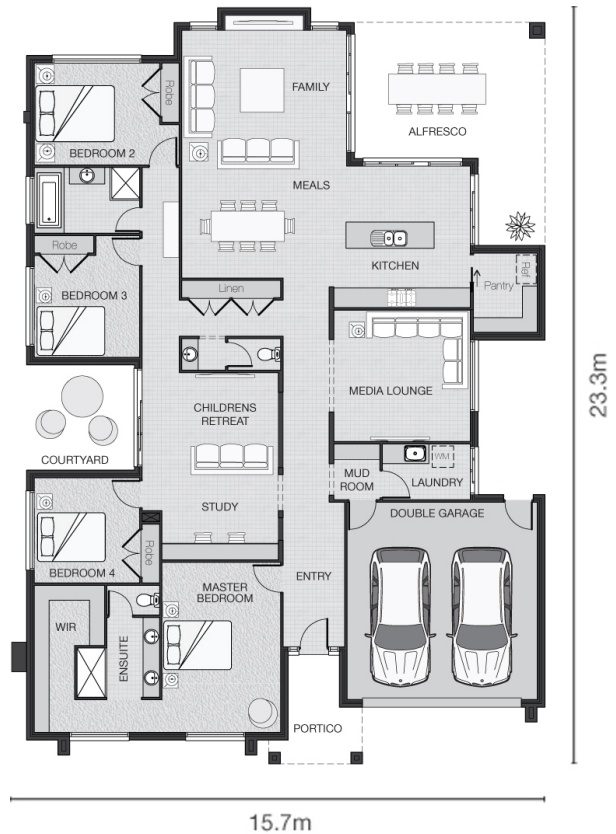
**Laundry**  
Folding clothesline

**Letterbox**  
Face Brick

**Outdoor**  
Extended Eaves  
Face Brick Work  
Water tank: 5000L  
Roof pitch: 25 degrees

**Portico Floor**  
Pavers/concrete

**Roof**  
Colorbond



Lara Wilson  
0412 025 336

This work is exclusively owned by Avalon Property Group Pty Ltd and cannot be reproduced or copied, either wholly or in part, in any form without the permission of Avalon Property Group Pty Ltd. For more information on this package including full details on the inclusions, the home and the estate, visit [www.adenbrook.com.au](http://www.adenbrook.com.au). Price is subject to soil test, contour survey and estate design covenants and is inclusive of GST. Adenbrook Homes reserves the right to change pricing without notice. Conditions apply. Adenbrook Homes Pty Ltd QBSA: 1122 127 ABN: 66 865 201 104