



HOME & LAND

4 

2.5 

2 

NON-FIXED PRICE

PACKAGE ID
1320



*Facade displayed is optional and may include additional costs.

The Kirra at Windarra Estate

House Details Land Details

Design: Standard Design
Size: 367m² 39.5 squares
Facade: Benson

Lot: 84 Wilga Drive
Suburb: Bunya
Size: 3508m²

Package Details

Alfresco Floor
Pavers & concrete
Cabinetry
Overhead Cupboards
Bench

Spacious layout
3 coat paint system
Guarant 22wk build
6*energy rating
Open plan living
Rumpus/Games
Media Lounge
Covenant Compliant

Driveway & Path
Pavers/concrete path
Pavers/concrete drive

Internal Finish
Auto garage door
European appliances
Built-in wardrobes
Flush panel doors

Flooring
Carpets
Ceramic tiles

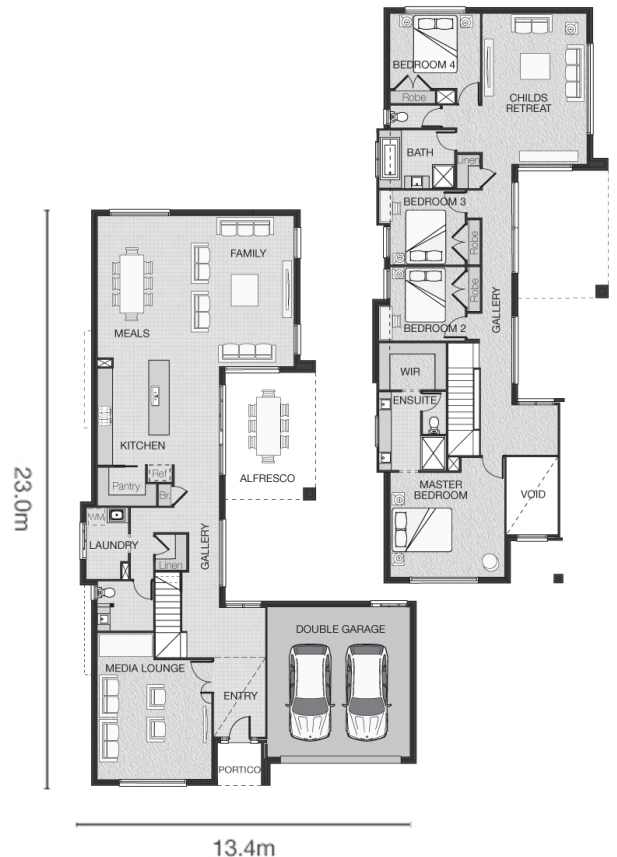
Highlights
Local council fees
Adenbrook inclusions
Class "M" Slab
Under-roof alfresco

Laundry
Folding clothesline
Letterbox

Face Brick
Outdoor
Extended Eaves
Face Brick Work
Water tank: 5000L
Roof pitch: 25 degrees

Portico Floor
Pavers/concrete

Roof
Colorbond



Lara Wilson
0412 025 336

This work is exclusively owned by Avalon Property Group Pty Ltd and cannot be reproduced or copied, either wholly or in part, in any form without the permission of Avalon Property Group Pty Ltd. For more information on this package including full details on the inclusions, the home and the estate, visit www.adenbrook.com.au. Price is subject to soil test, contour survey and estate design covenants and is inclusive of GST. Adenbrook Homes reserves the right to change pricing without notice. Conditions apply. Adenbrook Homes Pty Ltd QBSA: 1122 127 ABN: 66 865 201 104